



THE NEW YORKER
PHOTO BOOTH

JULY 30, 2010

**ON AND OFF THE WALLS:
HIDING IN PLAIN SIGHT**

Posted by Maria Lokke

“Incognito,” the current show at Yancey Richardson, explores the ways that photographers can weave their own presence into their work. Many of the photos serve as clandestine self-portraits: traces of the artists appear as shadows, reflections, and body parts, clues embedded within each photographer’s game of hide-and-seek with the camera.



Some of the photographers’ cameo appearances, such as Mitch Epstein’s or Lisa Kereszi’s, appear random, even accidental. For other artists, like Francesca Woodman or Lee Friedlander, they represent a much more deliberate and long-standing focus from a larger body of work. The show provides a healthy mix of both calculated and happenstance self-portraiture, in some cases revisiting well-known photographs within this context. Certain photos I thought I knew well took on new intricacies. The TV in a Stephen Shore hotel room suddenly offered the photographer’s faint reflection; the same occurred in the opaque eye of one of Esko Mannikko’s

horses. Untangling each picture is both a fun exercise in close looking.

The show is up through August 27th. Here's a selection.



Esko Mannikko, "Untitled," from the "Harmony Sisters" series.



Kenneth Josephson, "New York State," 1970



Rachel Perry Welty, "Lost in My Life," 2010. Welty constructed this pattern out of price tags, which she turned into wallpaper and fabric. Yancey Richardson Gallery sells editions of the same tote bag Rachel carries here for \$99 each.



Lisa Kereszi, "Thrilling, Neon Sign, Niagara Falls, Canada," 2005.



Lee Friedlander, "Colorado," 1967.



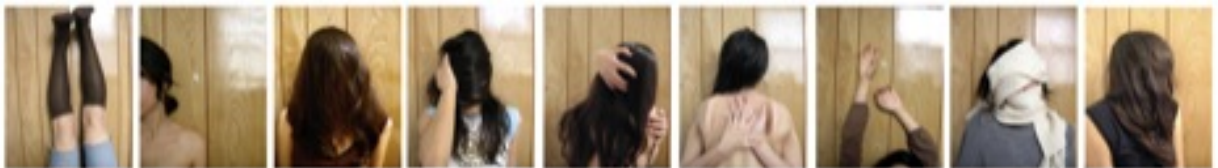
Mitch Epstein, "Untitled, New York," 1997



Matthew Pillsbury, "Matthew Pillsbury, Alias, 9-10 pm," 2010. For this series, Pillsbury photographed himself watching television shows, setting the camera's shutter speed to the duration of the program. Copyright Matthew Pillsbury / Courtesy Bonni Benrubi Gallery, NYC



Kenneth Josephson, "Matthew," 1963.



Amy Elkins, from the series "Beyond This Place," 2006-present. As part of this series, Elkins has taken a photo of herself every day since 2006.

Top image: Francesca Woodman, "P.059 Untitled, Providence, Rhode Island," 1976.